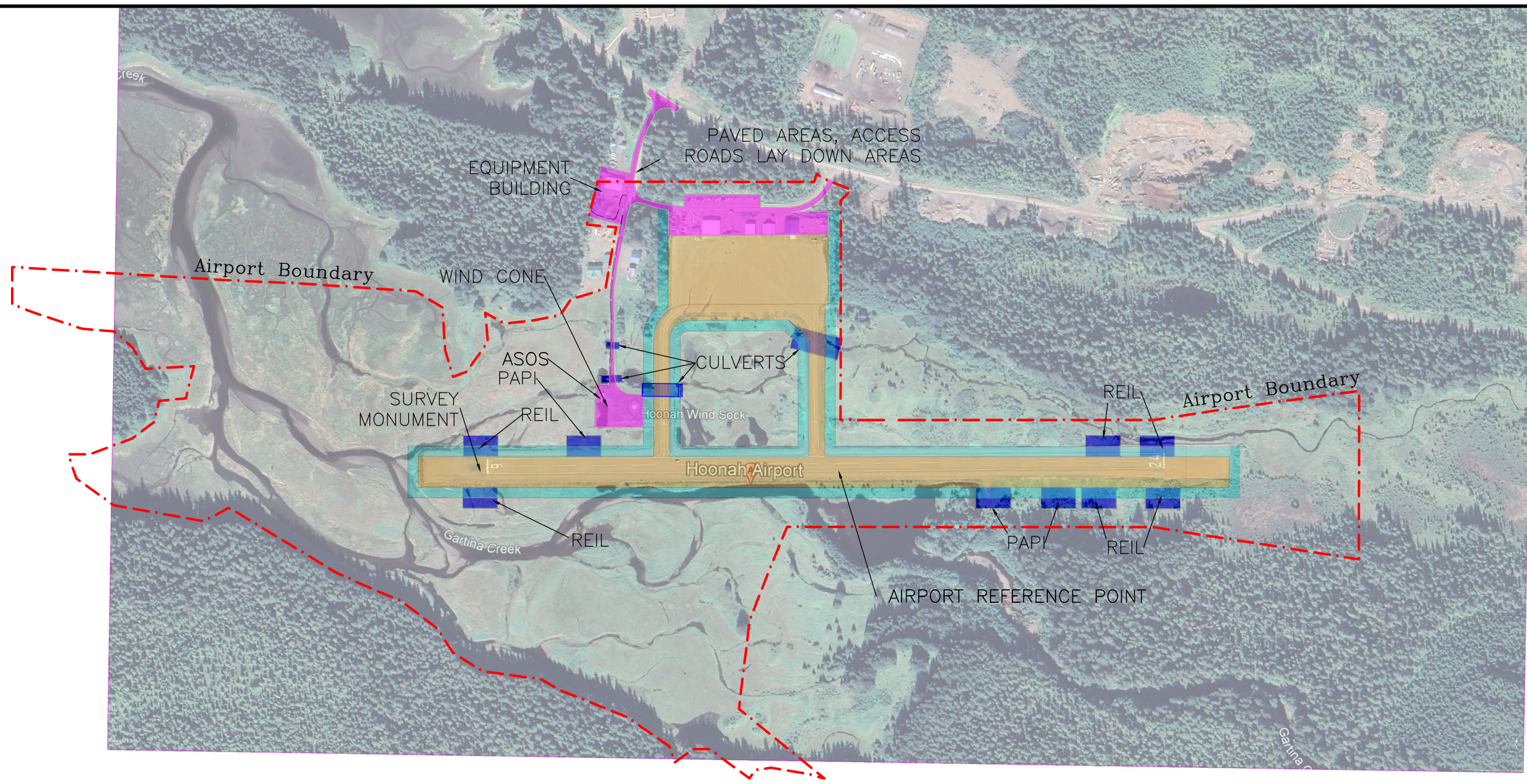





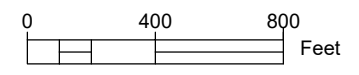


PLANS DEVELOPED BY: STATE OF ALASKA, SOUTHCOAST REGION, 6860 GLACIER HWY, JUNEAU, AK 99811, (907) 465-1763  
Q:\thin\SFAP\00523\EN\Draws\Design\Bilby\Survey\Exhibit\_no\_approach\_alternate-Hwy-Gen



-  AIRPORT PROPERTY BOUNDARY
-  CAPTURE FORESLOPES TO 50FT USING TRADITIONAL SURVEYING METHODS AND BATHYMETRY WHERE STREAMS ARE ENCOUNTERED
-  CAPTURE TARMAC WITH HIGH ACCURACY, HIGH POINT DENSITY METHODS. TIN WILL BE USED FOR PROFILE MILLING DESIGN
-  CAPTURE APRON AND PARKING LOT AND ACCESS ROADS AREA USING TRADITIONAL SURVEYING METHODS (EX. RTK-GPS)
-  ADDITIONAL AREAS OF HIGH INTEREST TO DESIGN



DESIGN WR

DRAWN MU

CHECKED TD

STATE OF ALASKA  
DEPARTMENT OF TRANSPORTATION AND PUBLIC FACILITIES  
SOUTHCOAST REGION-DESIGN AND CONSTRUCTION-AVIATION


BY	DATE	REVISIONS

HOONAH AIRPORT REHAB  
PROJECT NO. SFAPT00523  
AIP: 3-02-0125-xxx-2028  
SURVEY REQUEST AREAS

SHEET  
1 OF 1